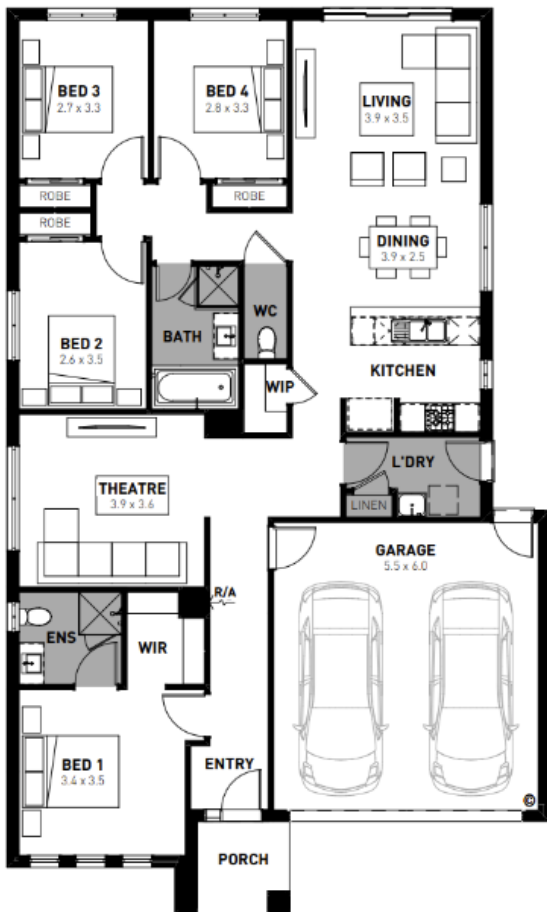


Up to  
**\$25,000\***  
of added  
inclusions

# Addison Boost 20

FROM price package  
**\$849,893\***

4 2 2



**Briody Grove, Torquay – 350m<sup>2</sup>**  
**Lot 145 Briody Drive**

- # Prescott facade included
- # 7-star energy rating
- # Quality floor coverings throughout
- # 20mm crystalline silica-free benchtops
- # 900mm stainless steel kitchen appliances
- # Double glazed windows and sliding doors
- # Downlights to entry, kitchen, dining and living
- # Overhead cabinetry to kitchen
- # 2550mm high ceilings
- # 12 month maintenance period
- # 25 year structural guarantee

**Homebuyers**  
Centre

\*Terms and conditions apply. The 'Homebuyers Boost' is only applicable to the Jasper Boost 17, Addison Boost 20, Harvey Boost 23, Lawson Boost 28 and Onyx Boost 21 floor plans and is only available to customers who sign a Preliminary Works Contract (PWC) between April 1, 2025 and June 30, 2025. Up to \$25k worth of inclusions is based on the RRP of overhead cabinetry to kitchen, 20mm crystalline silica-free benchtops to kitchen, bath and ensuite, roller blinds (excluding wet areas) and downlights to kitchen, living, dining and hallway based on the Onyx Boost 21. The 'Homebuyers Boost' pricing includes Homebuyers Centre's Bromleigh, Celine, Prescott and Soul single storey designer facades, and Urban and Cosmo double storey designer facades within the base price. This offer cannot be modified, substituted, redeemed for cash or applied to the base price of the home. Not available with any other discounts, incentives or promotions. Homebuyers Centre reserves the right to update, change or cease this offer at any time. Images are for illustrative purposes only and may depict upgrades, fixtures or fittings not included. See <https://vic.homebuyers.com.au/disclaimer/> for full terms and conditions. The building practitioner is ABN Group (Vic) Pty Ltd trading as Homebuyers Centre CDB-U 49215

**Blake Pilkington**  
0422 856 815  
[blakewp@homebuyers.com.au](mailto:blakewp@homebuyers.com.au)