



# House & Land Package

# \$853,976

**Bray 19**

Origin Collection

105 Eucalypt Way, Torquay

Untitled

Hampton Facade

 4
  1
  2
  2

**House Size**  
19sq | 12.8m W x 15.8m L

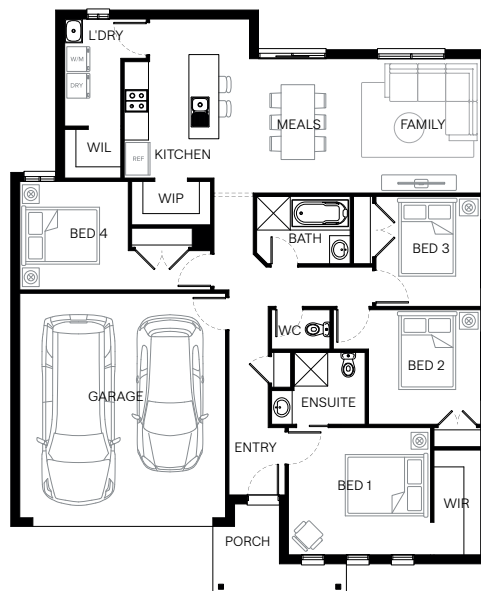
**Block Size**  
362m<sup>2</sup> | 14.5m W x 25.0m L

### Standard Inclusions

- Fixed site costs
- Developers guidelines
- Choice of included facades
- 7-Star energy efficiency rating to all orientations

### Premium Inclusions

- 3.5kw solar PV system and 3.0kw inverter
- Tiled shower bases
- COLORBOND® Roof included
- Choice of laminate or tiled flooring to entry, kitchen, family and meals. Carpet to the remaining areas
- 600mm Technika oven and cooktop
- 20mm Quantum Zero Benchtops to kitchen



**Julian Rullo**

New Home Consultant

0476 812 118

[jrullo@fairhavenhomes.com.au](mailto:jrullo@fairhavenhomes.com.au)

*Built with Care*



[fairhavenhomes.com.au](http://fairhavenhomes.com.au)

BRIODY GROVE

T&Cs Apply. See website for details. CDB-U 48497.

View more packages

